

March 2025 Newsletter



A MESSAGE FROM THE LEADERSHIP TEAM

The first part of the spring term has flown past. Year 11's have finished their March 2025 mock exams and these results will be coming out soon. The mocks are there to simulate the exam, get used to the exam environment and provide a great opportunity to pinpoint on areas needed for intervention/additional recap before the real exams. It has been great to see students working through their anxieties about exams with support from the staff team. It was also great to see a high number of our school cohort visit the Tim Burton Exhibition in London, it was great to see the enthusiasm and hear positive feedback following the visit which will really support their GCSE Art Projects. We also welcome our new English Teacher Molly Wright who will be starting after the Easter break and say goodbye to Abra Heritage who will be moving on to pastures new at the end of this half term. Molly Wright will be coming in on the 2nd April to complete a transition to meet with students before starting. We thank students for their patience while waiting for the change to take place for English. Amy Bew will continue to offer support who has kindly been teaching on a Tuesday and Wednesday. We wish all a restful Easter break.

Mark Anderson - Head of Centre

WHAT'S HAPPENING IN THE CENTRE?

Our last day of term will be dedicated to Easter.

Parents Evening

Thursday 3rd April

From 2pm to 5.30pm

This will be an opportunity to meet your child's subject teachers and discuss their academic progress within the Centre. Parents evening will take place between 2pm-5pm. If you would prefer to arrange a Teams or Telephone call, please let us know and we will be in touch to arrange this on an alternative date.

Students break up for half-term
04/04/25 and
return to school
24/04/25

PSHE Topics

PSHE topics for Year 9 in Summer Term 1 include:

Mental Health
Change and Emotions
Better Sleep
Growth Mindset
Resilience
Managing Social Anxiety

Absences

If your child is going to be absent please email attendance@rbnorwich.org.uk with a reason for absence.

STRUCTURE

Registration - 08:55-09:00

MICR - 09.00-09.15

Lesson One - 09:15-10:15

Break - 10:15-10:30

Lesson Two - 10:30-11:30

Lesson Three - 11:30-12:30

Lunch - 12:30 - 13:30

Lesson Four - 13:30-14:30

Lesson Five 14:30-15:25

FESTIVAL OF KNOWLEDGE TRIP

Students visited the Festival of Knowledge at the Norfolk Showground to speak to different companies and workplaces to learn more about career options. Students enjoyed speaking to employers and collecting freebies!



Student feedback:

"It was fun! Very interesting, not much art though, my favourite was the NHS part, did you know there are over 350 different NHS Careers!"

"It was really good, very interesting and there was a wide range of stalls, there were interactive bits and leaflets. The hands on activities in construction were good"

"It was really interesting and interactive"

"It was pretty good, lots of freebies and leaflets"

"It was nice and very interesting, I got a free lip balm and liked collecting freebies".

"It was very busy but helpful with answering questions, it was not too intimidating".

"It was really good, my favourite part was everything, lots of freebies".



TERM DATES

2024-2025 Academic Calendar

September 2024						
M	T	W	Th	F	S	Su
2	3	4	5	6	7	8
9	10	11	12	13	14	15
16	17	18	19	20	21	22
23	24	25	26	27	28	29
30						

October 2024						
M	T	W	Th	F	S	Su
	1	2	3	4	5	6
7	8	9	10	11	12	13
14	15	16	17	18	19	20
21	22	23	24	25	26	27
28	29	30	31			

November 2024						
M	T	W	Th	F	S	Su
				1	2	3
4	5	6	7	8	9	10
11	12	13	14	15	16	17
18	19	20	21	22	23	24
25	26	27	28	29	30	

December 2024						
M	T	W	Th	F	S	Su
						1
2	3	4	5	6	7	8
9	10	11	12	13	14	15
16	17	18	19	20	21	22
23	24	25	26	27	28	29
30	31					

January 2025						
M	T	W	Th	F	S	Su
		1	2	3	4	5
6	7	8	9	10	11	12
13	14	15	16	17	18	19
20	21	22	23	24	25	26
27	28	29	30	31		

February 2025						
M	T	W	Th	F	S	Su
					1	2
3	4	5	6	7	8	9
10	11	12	13	14	15	16
17	18	19	20	21	22	23
24	25	26	27	28		

March 2025						
M	T	W	Th	F	S	Su
					1	2
3	4	5	6	7	8	9
10	11	12	13	14	15	16
17	18	19	20	21	22	23
24	25	26	27	28	29	30
31						

April 2025						
M	T	W	Th	F	S	Su
	1	2	3	4	5	6
7	8	9	10	11	12	13
14	15	16	17	18	19	20
21	22	23	24	25	26	27
28	29	30				

May 2025						
M	T	W	Th	F	S	Su
			1	2	3	4
5	6	7	8	9	10	11
12	13	14	15	16	17	18
19	20	21	22	23	24	25
26	27	28	29	30	31	

June 2025						
M	T	W	Th	F	S	Su
						1
2	3	4	5	6	7	8
9	10	11	12	13	14	15
16	17	18	19	20	21	22
23	24	25	26	27	28	29
30	31					

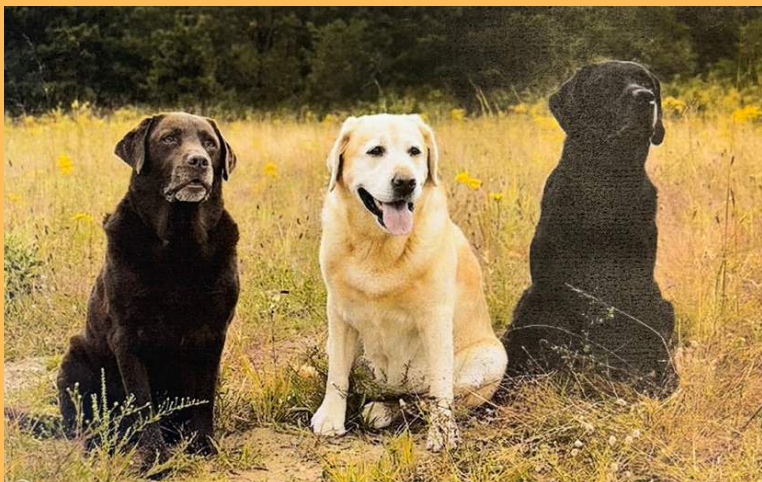
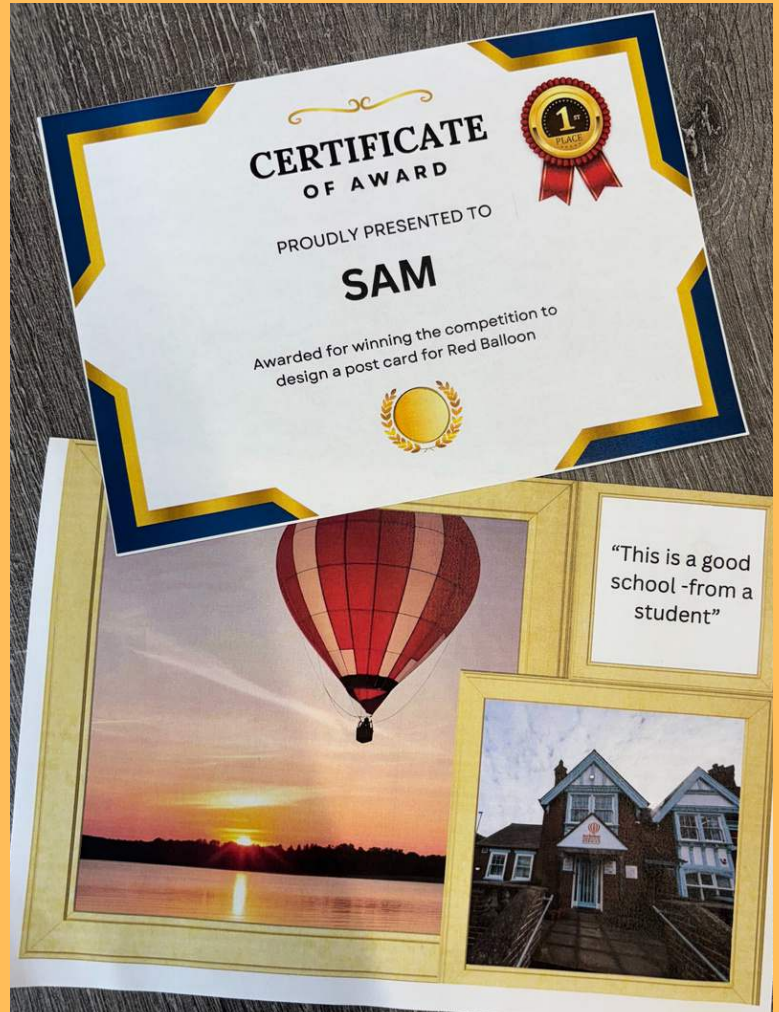
July 2025						
M	T	W	Th	F	S	Su
	1	2	3	4	5	6
7	8	9	10	11	12	13
14	15	16	17	18	19	20
21	22	23	24	25	26	27
28	29	30	31			

August 2025						
M	T	W	Th	F	S	Su
				1	2	3
4	5	6	7	8	9	10
11	12	13	14	15	16	17
18	19	20	21	22	23	24
25	26	27	28	29	30	31

Key: White Dates - Pupils expected in
 Yellow dates - Pupil holiday
 Red dates - bank holiday
 Purple dates - Staff inset dates

POSTCARD COMPETITION

This month, students were given the opportunity to take part in the postcard competition. The students were asked to design a postcard for Red Balloon and this Postcard is going to be used to work in partnership with St John's Care Home as part of Dementia awareness week to write to residents within the residential care home.

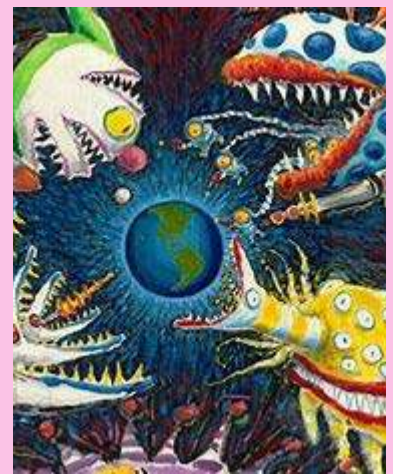


ART

Tim Burton Exhibition Trip to London

On Thursday 20th March Art students went on a trip to the Design Museum in London to see the Tim Burton exhibition.

Last week, our school had the incredible opportunity to visit the Design Museum and explore "The World of Tim Burton" exhibition. Students were captivated by the imaginative and whimsical works of the renowned filmmaker and artist. From iconic movie props to original sketches, the exhibition showcased Burton's unique creative process and artistic vision. It was a fascinating journey through his career, inspiring everyone with his distinctive style and storytelling. The trip was not only educational but also sparked creativity and enthusiasm amongst our students. A big thank you to all who made this memorable experience possible!





Photos and a poem
from the booklet for the
students on the art trip.



THE WORLD OF TIM BURTON

In Burton's world, so strange and bright,
We ventured forth, hearts full of delight.
From skeletons to ghosts so tall,
We found the clues and answered them all!

In the museum, where magic thrives,
We explored his visions, so alive.
From Beetlejuice to Edward's hands,
Burton's creativity took us to strange lands!

We looked for sketches, dark and neat,
Where childhood dreams and monsters meet.
Jack's inspiration, spooky and grand,
Born from a costume, close at hand!

We found the props, the films, the tales,
Where imagination never fails.
We solved each riddle, quick and true,
Tim Burton's world awaited us too!



LESSON UPDATES

Science

In Science, this term students have completed their mock exams. Students have been working on microscopy and distillation. The students also had a fun session of paracording



Reflection Piece on Psychology Lessons

One student has written about his experience of Psychology so far.

I originally chose psychology as a subject because I have always wanted to better understand the mind and why people behave the way they do - I've always been fascinated by the way people live their lives! In psychology lessons, I really enjoy how you can apply everything you learn to everyday life, making it a really practical and useful subject, in and out of the classroom. I like how the course covers a wide range of psychological topics; it gives an overview of human behaviour in a really broad and in-depth way. I've been most inspired by real-life studies and conducting my own studies during lessons - this provides context to what we learn and helps me apply it to my everyday life. In the future, I'm considering studying psychology beyond GCSE level, with hopes of reaching degree level, but outside of education, I hope to use the knowledge from the course to make meaningful contributions to society and better understand different people's needs and thought processes, in order to better communicate and collaborate with people around me.

So far, I've enjoyed the development unit the most, and this was a part of the course I was really anticipating. It's so interesting to learn about how the brain grows and matures, and how people evolve over time. I really want to use this knowledge in my future, if I was ever to become a parent myself, to better understand my child's needs! My psychology teacher, Lucie, is incredibly passionate about the subject and has studied it herself as an undergraduate, so she is the perfect teacher and an amazing source of inspiration. Overall, I am thoroughly enjoying GCSE Psychology and can't wait to see what the rest of the year has in store!

Children's University

All Year 9's now have a Children's University Passport. Children's University is a charity that works in partnership with schools to develop a love of learning in children. They do this by encouraging and celebrating participation in extra-curricular activities inside and outside of school.



Creative Skills

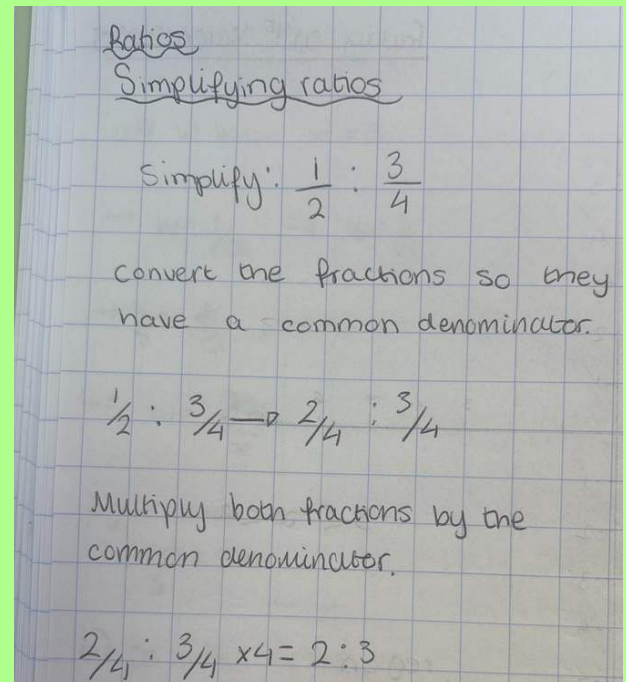
Students studied the history of Tic-Tac-Toe. They then created some designs of their own. Using air-dry clay they made their boards and counters. Once dry they painted them. Some competitive games were had by all!



One student has used a Rick and Morty theme for her tic-tac-toe project.

Maths

In Maths, students have completed their mock exams. Students are currently covering inequalities, percentages and construction.



Bunting

One student made bunting on the last day of term for Valentine's Day.



Woolly Stars

One student has made star decorations using cardboard and different coloured wool.



Fidget Toys



Some students had some fun making Doughnut fidget toys out of a sock!



Cushion

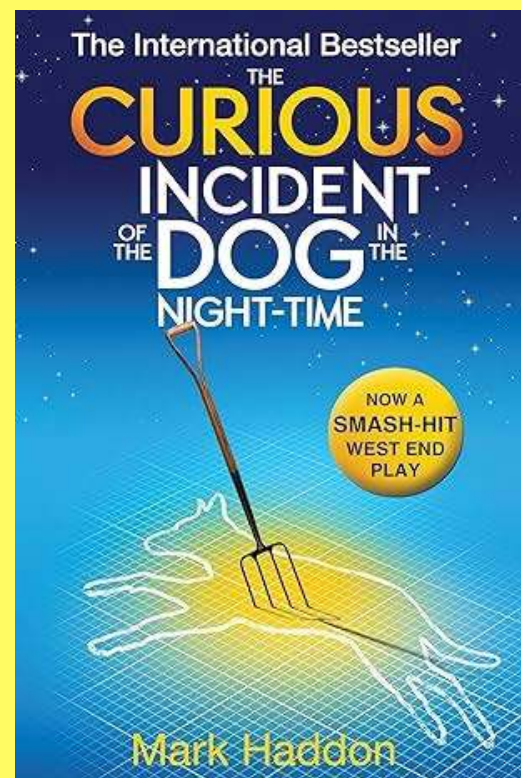
This cushion was machine stitched using blue cotton material. Transfer paper was used to iron their chosen picture onto the front. It was softly stuffed with toy filling.



Book of the Month

The Curious Incident of the Dog in the Night-Time

The Curious Incident of the Dog in the Night-Time is a 2003 mystery novel by British writer Mark Haddon. The title refers to an observation by the fictional detective Sherlock Holmes in the 1892 short story "The Adventure of Silver Blaze". The novel follows the story of a young boy named Christopher who investigates the murder of his neighbour's poodle using deductive logic, inspired by Sherlock Holmes.



AQA

Year 9 have been working on the following AQA topics -

Creative Workshop – Make-up (AQA 120541)

One of our year 9 students has brought in their own fantastic special effects make-up kit and has been sharing their knowledge of 'wound' effects. Very realistic! We are also hoping to undertake a session with a special effects make-up artist as part of the AQA Award.

Basic Karaoke (AQA 114930)

We have been singing karaoke and exploring influential artists - it turns out we have some fantastic singing voices within the group! It has also been great to have a stress-busting singalong at the end of the day and explore other music tastes.

Fundraising for a Charity (AQA 70582)

The students have a fundraising event in the pipeline as part of this AQA award – we have discussed the importance of charities and our learners have some great fundraising ideas. Watch this space...

AQA

One student has been focusing on completing an AQA unit award focusing on their main interests including animals and history. In particular a highly interesting unit was Animal Astronauts where we looked into reasons why animals are sent to space and the ethics around the subject.

ANIMAL ASTRONAUTS SENT TO SPACE

Animals that have been sent to space:

- Dog
- Tortoise
- Lady birds
- Fruit flies
- Fish
- Bacteria
- Cat
- Monkey
- Chimpanzee
- Frog

Why are animals sent to space:

- Animals were first sent to space to make sure it was safe for humans
- Animals were sent to space for studies such as frogs being sent to space to study motion sickness and see how humans would react.

Year 9 Students have been focusing on their AQA unit awards and looking into special effects make-up. Some excellent work including bruising and gory looks have been produced using face paint, scar wax and further materials showing more talent within the centre.

Careers Adviser

A careers board has been added to the dining room for students to keep informed of the opportunities available to them.



Year 9 Science

In Science, Year 9 have been looking into pollution and global warming focusing on researching ways we can help to limit and slow down the impact global warming has. The work below was made as a class collaboration of ideas.



Baking

Red Balloon Students have been baking often this month.



Vegetable Samosas



Flourless Chocolate
Cake topped with
chocolate and
sprinkles



Fruit Tarts using the 'rubbing in' method



PSHE

In this piece of work, the student explores the topic of substance awareness, with a focus on magic mushrooms and their effects. The student explains that magic mushrooms contain a substance called psilocybin, which can alter a person's perception, mood and thoughts.



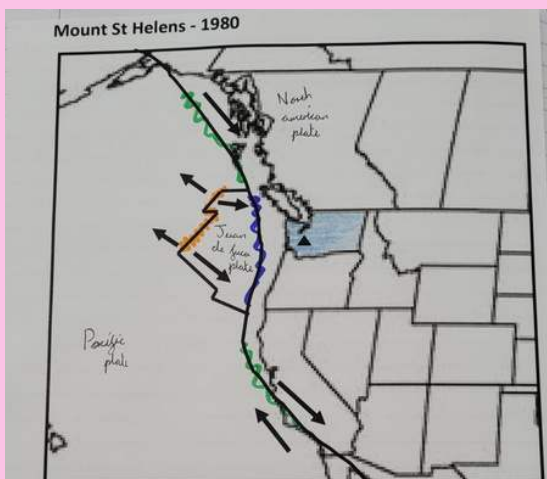
Geography GCSE

In this piece of work, the students assumed the role of a member of the United States Geological Survey (USGS) tasked with making critical decisions regarding evacuation in the face of a natural disaster, visiting events leading to the eruption of Mount St Helens in 1980.

Decision-making. Can't see how good a postgrad you are...

Date	Event	A	B	C	Points
18.3.80 5.36pm	6.2m of lava rock North Bluffs, etc	Must write these observations and send them to the manager the stage of the eruption.	Send out a helicopter to the mountain to find out the status.	Continue to monitor volcanoes.	10
22.3.80 12pm	more lava & dust	Call the State Government to warn of an eruption to the west low area.	Call the State Government to warn of a likely eruption to the east low area.	Send out a helicopter to collect more information.	0
27.3.80 11am	21m of lava etc	Set up a danger zone around the volcano with barricades etc.	Declare a state of emergency and warn the public to stay away from the volcano.	Do nothing at this time.	2
27.3.80 1.2.36pm	Volcano erupted Full force	Call the State Government to warn of an eruption to the west low area.	Call the State Government to warn of a likely eruption to the east low area.	Send out a helicopter to collect more information.	10
27.3.80 2.12.36pm	lava fire 2d later	Evacuate the danger zone marked on your map.	Declare a state of emergency and warn the public to stay away from the volcano.	Do nothing at this time.	0
1.4.80 5.30pm	5.30pm	Call the State Government to warn of an eruption to the west low area.	Call the State Government to warn of a likely eruption to the east low area.	Send out a helicopter to collect more information.	2

Date	Event	A	B	C	Points
7.4.80	lava flow 40m high etc	Send out warning of an eruption to the west low area and evacuate the area if necessary.	Warn that a landslide on the northern side of the mountain might start an eruption.	Don't announce anything - wait a geologist to set up a station on the north side to monitor it.	2
30.4.80	Volcano has erupted	Force Harry to evacuate.	Give him a week to change his mind.	Send him home.	2
18.3.80	lava flow etc	An eruption is imminent and the population to be warned.	Advise people SHOULD leave the area.	Don't announce anything - wait for more data to arrive from other geologists.	10
17.2.80	nothing is happening etc	Allow a colony of 500 wolves to enter the danger zone.	Allow vehicles to be brought off 50 a time to reduce the risk.	Wait until you are ready to begin work.	2
18.2.80	nothing is happening etc	Call the State Government and advise that the volcano seems to be settling down again.	Send out teams to collect samples from the volcano.	Continue to monitor and maintain danger zone.	10
18.2.80	erupted 8.2.80	Call the State Government and advise that the volcano seems to be settling down again.	Send out teams to collect samples from the volcano.	Continue to monitor and maintain danger zone.	10
		Begin to pack up items and remove equipment.	Leave equipment in place but send some of your team home.	Continue to monitor and maintain danger zone.	10



- Colour Washington State.
- Label the three plates - Pacific, North American, Juan de Fuca.

AIM HIGH! Look at the arrows and colour code the plate boundaries

- Constructive ← →
- Destructive → ←
- Conservative ← →
- Orange = Constructive
- Blue = Destructive
- Green = Conservative

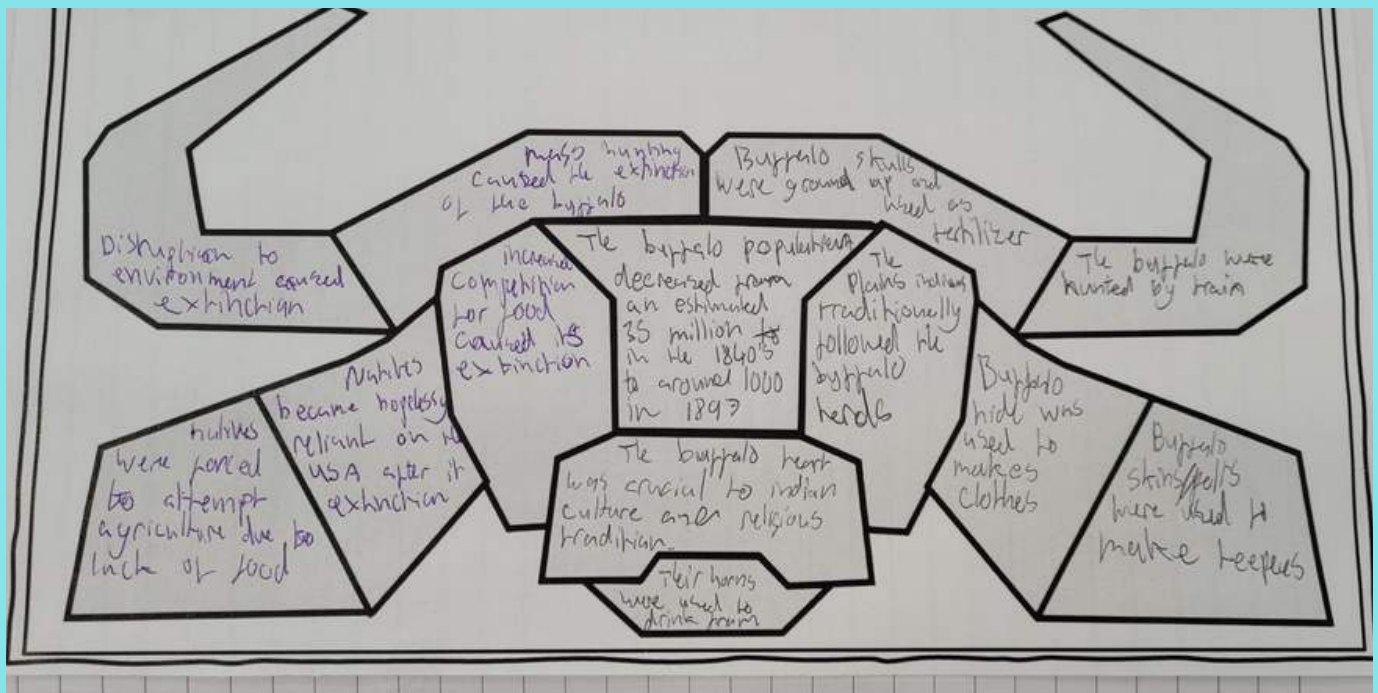
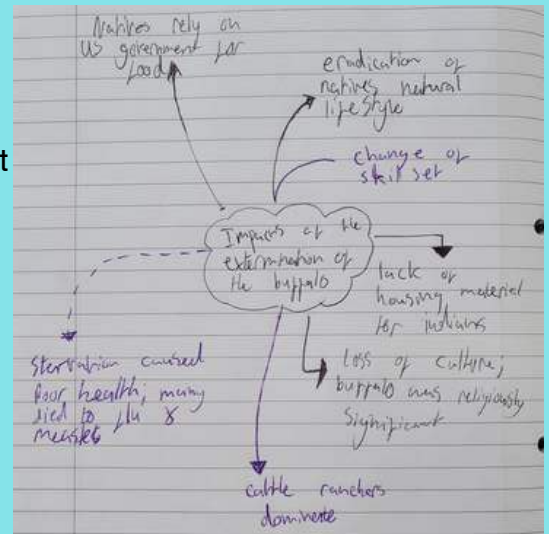
Why are there volcanoes in this part of the USA? It's because where Juan de Fuca plate is pushing against the north american plate which is a destructive boundary.

Good use of plate names!

The students demonstrated an understanding of the key factors involved in decision making, including monitoring seismic activity, analysing data from sensors and assessing the potential risks to local populations.

History GCSE

In this piece of work, the student explores the critical role that buffalo (bison) played in the history and culture of the American West, particularly for Native American tribes. The student highlights how buffalo were not only a vital source of food but also provided materials for clothing, tools, and shelter. The student also discusses the spiritual significance of buffalo to many Native American tribes, noting how the buffalo was considered sacred in many cultures. The animal's importance extended beyond the physical; it was also seen as a symbol of life and abundance.



IT

In Year 10 we have been programming a Crumble microcontroller to operate motors and coloured lights. We made a fairground ride out of recycled cardboard. When you press a switch, the ride motor rotates the disc for a number of seconds and the light changes from red to green.



NEWS

English Department

As many of you know we will be saying goodbye to Abra Heritage during the Easter break who is sadly moving on.

We are pleased to announce the appointment of Molly Wright to our English Team. Molly is a qualified English teacher with experience working in SEN and mainstream school provision and comes with a wealth of knowledge.

Molly will be coming in for some transition days before Easter and will be working alongside Amy Bew to support the development of our English department.



Hair and Beauty



Students have been working on nail art, hairstyles and make-up looks in Hair and Beauty.



One student created a mood board for their make-up theme of Stitch.



Health and Social Care

In Health and Social Care one student has been looking at employment in the health sector and Mental Health.

Which job are you applying for?
 Youth offending team worker

Why are you applying for this job?
 Because I am a hardworking, friendly and reliable person.

Why would you be good at this job?
 I am confident I can do well in this job because I am punctual and organised individual. I am also trust worthy.

What relevant experience do you have?
 I know people who are involved with the service.

Signed:

Word Bank
 because ✓ hard-working ✓ punctual ✓ experience reference
 reliable ✓ friendly ✓ organised ✓ confident ✓ trustworthy ✓

Ecotherapy Farm

Students have been enjoying spending time with the horses at Ecotherapy Farm this term.



Games Development

In Games development this month, some of our students finished their Young Game Designer game concept and game making.

Game concept by two Red Balloon students:

Cosmicpanions is a retro point and click game where the player's goal is to befriend the other crew members aboard the freight ship they work on, the Asteri, by talking with and completing quests for them over the two week journey you spend aboard the ship completing maintenance tasks.

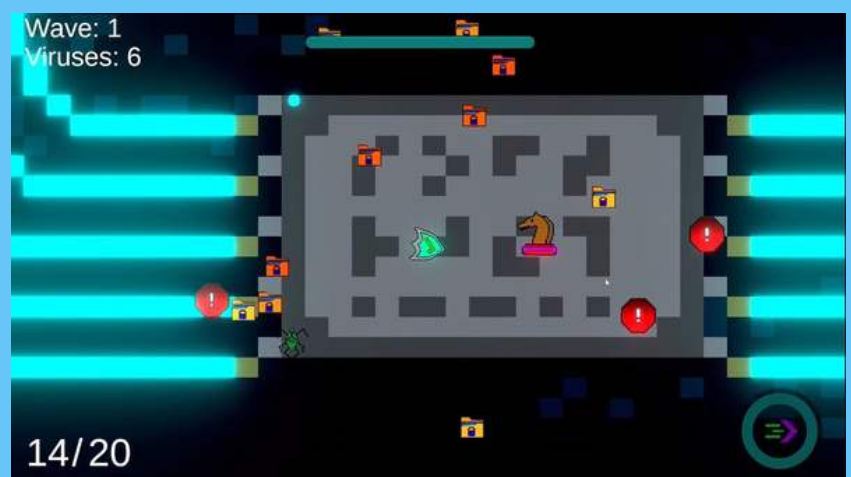


Slime World is a 2D Platformer where you play as a small Slime character trying to reach the world's highest point by climbing and jumping your way through a maze of tunnels and platform puzzles.

Game Development: Game Making

One of our students has finished his game for the Young Game Designer Awards 2025.

Virus-blaster is a top down 2D bullet hell game where you play as the anti-virus defending files on a computer.



PHARMACY FIRST

Healthcare Advice & Treatment - Pharmacy First for parents/carers

Did you know you can get healthcare advice and treatment for common illnesses without needing a GP appointment? Pharmacy First services allow you to visit your local pharmacy for expert help with a range of minor health concerns—so you can get the right treatment, faster.

Pharmacists can provide treatment for the following conditions, subject to age restrictions:

- Sore throat (Ages 5 years and over)
- Ear infection/earache (Ages 1 to 17 years)
- Impetigo (Ages 1 year and over)
- Urinary tract infections (UTIs) (Women aged 16 to 64 years)
- Infected insect bites (Ages 1 year and over)
- Sinusitis (Ages 12 years and over)

Need to find your nearest participating pharmacy?

Simply follow the link below for a location finder:

<https://improvinglivesnw.org.uk/the-pharmacy-first-service/>

The Pharmacy First service provides free healthcare advice, making it easier for you to get the guidance you need quickly and conveniently. Where appropriate, treatment options may also be available.



Improving lives **together**

Norfolk and Waveney Integrated Care System

NHS

PHARMACY FIRST



GET THE RIGHT TREATMENT, FASTER!



What can pharmacists help with?

- Sore throats (From 5 years and over)
- Ear Infection/Earache (Children ages 1 to 17 years old)
- Impetigo (Adults and children over 1 year old)
- Urinary tract infections [UTIs] (Women aged 16 to 64 years)
- Infected insect bites (Adults and children 1 year and over)
- Sinusitis (Adults and Children aged 12 years and over)
- Shingles (Adults ages 18 and over)



For more information,
Scan the QR code



Visit your nearest Pharmacy, No appointment needed!

HELPFUL INFORMATION

Launch of the New SEND and Inclusion Support Line

There's lots of information available on both the Norfolk Schools website Special Educational Needs and Disabilities (SEND) - Norfolk Schools and Learning Providers - Norfolk County Council and the Local Offer.

However, if you can't find the information you need to support children and young people with SEND, or those at risk of exclusion, you can now call us on **0333 313 7165** and speak to a professional for advice and information.

The new phone line opened on Monday (23 September) and is available on weekdays from 9am until 5pm. It will make it easier for professionals and families to get the information they might need.

The team can give you advice on specific children or groups of children and young people with SEND.

We know that schools and parents can sometimes find it difficult to find the information they need, being able to talk to someone to navigate the support on offer will help ensure that the right support is available at the right time, first time.

We're encouraging all professionals working with children and families to signpost them to this phone line, before suggesting they apply for an EHCP needs assessment. This is to make sure we're doing all we can at the earliest opportunity to support families. The new phonenumber will also help to ensure that you get to the right service.

USEFUL WEBSITES FOR INFORMATION AND SUPPORT:

**Red Balloon SEN Information/Support – Contact - Julie
Clements
– SEN Manager
julie.clements@rbnorwich.org.uk**

Send Local Offer www.norfolk.gov.uk/children-and-families/send-local-offer

This website is for anyone in the life of a child or young person aged 0-25 who has a special educational need and/or disability (SEND) in Norfolk. Here you can find information on support in education, learn about special needs services that can help children, young people and their families, find a support network - parents, groups and organisations and get guidance and advice about how to help a young person plan their adult life.

Preparing for Adult life (PFAL) www.norfolk.gov.uk/children-and-families/send-local-offer/preparing-for-adult-life

Designed for parent carers, so you can help your young person with SEND prepare for adult life. PFAL focuses on young people in the time of transition - 14-25-years-old. But it is never too early to start this process.

Justonenorfolk – www.justonenorfolk.nhs.uk

Children & Young people's Health Service that offers advice on a range of topics including Speech & Language, Mental and Emotional Health, Healthy Lifestyles, child development and Additional Needs. You can find information, make self-referrals and find support groups and resources.

FAMILY HUBS IN NORFOLK

Great Yarmouth

Early Childhood and Family Service base
Shrublands, Magdalen Way, Gorleston, Great Yarmouth, Norfolk,
NR31 7BP
Phone: 01493 448318

King's Lynn

Saint Augustine's Healthy Living Centre
Columbia Way, King's Lynn, PE30 2LB
Phone: 01553 669651

Norwich

Early Childhood and Family Service base Catton Grove,
Fiddlewood and Milecross
Hunter Road, Norwich, NR3 3PY
Phone: 01603 303359

Thetford

Thetford Early Childhood and Family Service base
Kingsway, Thetford, Norfolk IP24 3DY
Phone: 01362 654584

Hellesdon

Hellesdon Family Hub at Hellesdon Community Centre
Library and Community Centre, Middletons Lane, Norwich, NR6
5SR
Phone: 01603 303360

North Walsham

North Walsham Early Childhood and Family Service Base
Manor Road, North Walsham. Norfolk. NR28 9HG
Phone: 01263 739060

Long Stratton

Long Stratton Early Childhood and Family Service Base
6 Manor Road, Long Stratton, Norfolk, NR15 2XR
Phone: 01603 307703

STAFF



Mark Anderson
Head of Centre

mark.anderson@rbnorwich.org.uk



Abbey King
Deputy Head

abbey.king@rbnorwich.org.uk



Linda Clements
Deputy Head

linda.clements@rbnorwich.org.uk



Rachel Golding
Teaching & Learning
Lead

rachel.golding@rbnorwich.org.uk



Abra Heritage
English Teacher

abra.heritage@rbnorwich.org.uk



Laura Stearn
Science Teacher

laura.stearn@rbnorwich.org.uk



Jon Killow
Science Teacher

jonathan.killow@rbnorwich.org.uk



Mark Pinner
ICT Teacher

mark.pinner@rbnorwich.org.uk



Emma Newton
Art Teacher

emma.newton@rbnorwich.org.uk



Corinne Bruce
Vocational Tutor

corinne.bruce@rbnorwich.org.uk



Lucie-Anne Carter
1:1 Tutor (Trainee
Teacher)

lucie-anne.carter@rbnorwich.org.uk



Mollie Barbour
Tutor (Trainee
Teacher)

mollie.barbour@rbnorwich.org.uk



Julie Clements
SEN Manager

julie.clements@rbnorwich.org.uk



Nadine Davy
PA to Head of
Centre

nadine.davy@rbnorwich.org.uk



Ben Moss
School Counsellor

benjamin.moss@rbnorwich.org.uk



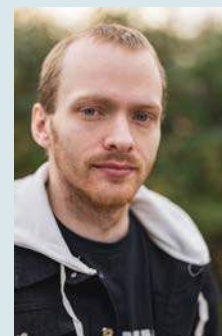
Jon Dennis
Life Coach

jon.dennis@rbnorwich.org.uk



Ella Parkinson
Behaviour Lead,
Attendance and
Wellbeing Adviser

ella.parkinson@rbnorwich.org.uk



Ryan Hughes
Games
Development Tutor

ryan.hughes@rbnorwich.org.uk



Lucy Kershaw
Intervention Support
Tutor

lucy.kershaw@rbnorwich.org.uk



Bozena Piotrowska
School cleaner/ lunch server



Ian Duckett
1:1 Coordinator
ian.duckett@rbnorwich.org.uk



Caroline Hamilton
LSA (1:1 support)
caroline.hamilton@rbnorwich.org.uk



Rachael Munro
LSA (1:1 support)
rachael.munro@rbnorwich.org.uk



Samera Jones
LSA (1:1 support)
samera.jones@rbnorwich.org.uk



Bobbie-Anne Mitchell
LSA (1:1 support)
bobbie-anne.mitchell@rbnorwich.org.uk



Emily Grint
LSA (1:1 support)
emily.grint@rbnorwich.org.uk



Megan Wiseman
LSA (1:1 support)
megan.wiseman@rbnorwich.org.uk



Hannah Hannam
LSA (1:1 support)
hannah.hannam@rbnorwich.org.uk



Oscar Stacey
Learning Support Mentor (1:1 Tutor)
oscar.stacey@rbnorwich.org.uk



Aaron Levy
Learning Support Mentor (1:1 Tutor)
aaron.levy@rbnorwich.org.uk



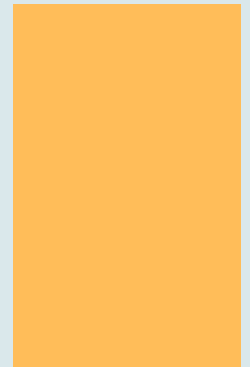
Fiona Muller
Self-Employed Art Tutor
fiona.muller@rbnorwich.org.uk



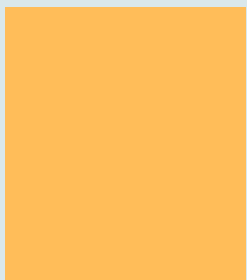
Holly Pearson
Learning Support Mentor (1:1 Tutor)
holly.pearson@rbnorwich.org.uk



Amy Bew
English Consultant/Teacher



Molly Wright
English Teacher



Siobhan Whiddett
Careers Adviser
siobhan.whiddett@rbnorwich.org.uk